

# New Executive Home

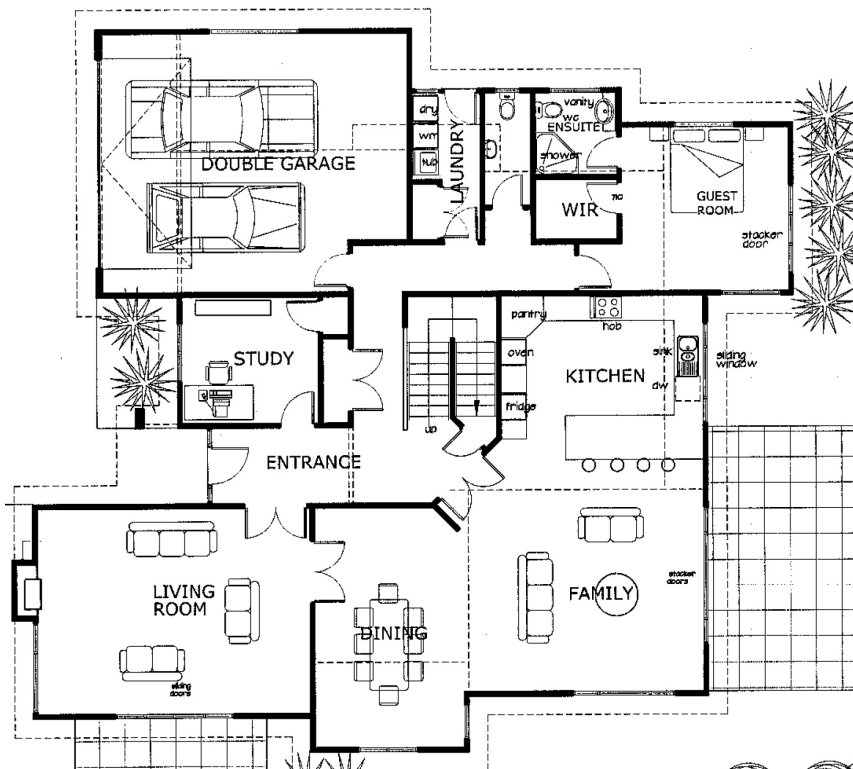
Lot 3 200 Westchester Drive, Churton Park



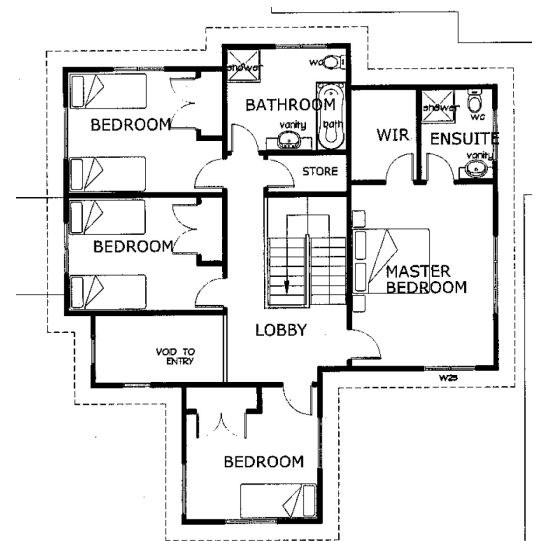
## FEATURES

- > 5 bedrooms plus study
- > Master bedroom with ensuite, walk in robe
- > Downstairs guest bedroom with ensuite.
- > Open plan kitchen, family, dining
- > Separate lounge with gas fire
- > Double glazed windows
- > Gas central heating
- > Double garage, internal access.
- > 10 year Master Build Guarantee
- > Floor area 331m<sup>2</sup>
- > PRICE: POA

## GROUND FLOOR PLAN



## FIRST FLOOR PLAN



**RUSSELL**  
**PROPERTIES** ESTD 1977

Mike Russell

Mobile: 0274 482 233 Phone: 04 478 4632

Email: russellproperties@xtra.co.nz